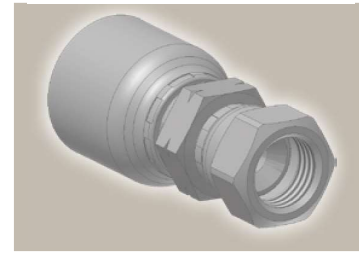
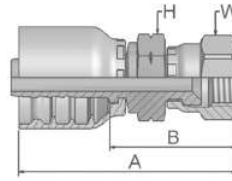


08 Female SAE 45° – Swivel Straight

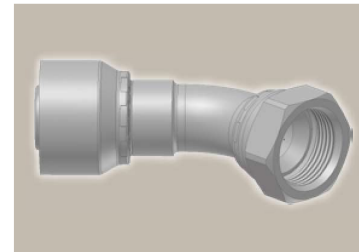
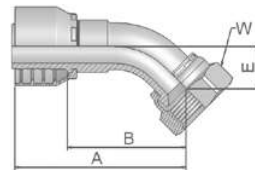
SAE J516



| Part Number | | Hose I.D. | | | | Thread | A | B | H | W |
|-------------|-----------|-----------|------|------|-----|--------|----|----|----|----|
| 46 series | 48 series | DN | Inch | Size | mm | UNF | mm | mm | mm | mm |
| | 10848-6-6 | 10 | 3/8 | -6 | 9.5 | 5/8x18 | 57 | | 34 | 19 |

37/3V Female JIC 37° SAE 45° – Dual Flare Swivel Female 45° Elbow

ISO 12151-5-SWE 45° – DKJ 45°



| Part Number | | Hose I.D. | | | | Thread | A | B | E | W |
|-------------|-------------|-----------|-------|------|------|-----------|-----|-----|----|----|
| 46 series | 48 series | DN | Inch | Size | mm | UNF | mm | mm | mm | mm |
| 13V46-4-4 | 13V48-4-4 | 6 | 1/4 | -4 | 6.4 | 7/16x20 | 53 | 29 | 10 | 17 |
| 13V46-5-4 | 13V48-5-4 | 6 | 1/4 | -4 | 6.4 | 1/2x20 | 57 | 33 | 9 | 17 |
| 13746-6-4 | 13748-6-4 | 6 | 1/4 | -4 | 6.4 | 9/16x18 | 55 | 31 | 11 | 19 |
| 13V46-5-5 | 13V48-5-5 | 8 | 5/16 | -5 | 7.9 | 1/2x20 | 53 | 29 | 10 | 17 |
| 13746-6-5 | 13748-6-5 | 8 | 5/16 | -5 | 7.9 | 9/16x18 | 58 | 35 | 10 | 19 |
| 13746-6-6 | 13748-6-6 | 10 | 3/8 | -6 | 9.5 | 9/16x18 | 60 | 37 | 11 | 19 |
| 13V46-8-6 | 13V48-8-6 | 10 | 3/8 | -6 | 9.5 | 3/4x16 | 67 | 44 | 15 | 22 |
| 13V46-10-6 | 13V48-10-6 | 10 | 3/8 | -6 | 9.5 | 7/8 14 | 69 | 46 | 17 | 27 |
| 13V46-8-8 | 13V48-8-8 | 12 | 1/2 | -8 | 12.7 | 3/4x16 | 61 | 37 | 15 | 22 |
| 13V46-10-8 | 13V48-10-8 | 12 | 1/2 | -8 | 12.7 | 7/8x14 | 70 | 46 | 16 | 27 |
| 13V46-10-10 | 13V48-10-10 | 16 | 5/8 | -10 | 15.9 | 7/8x14 | 69 | 44 | 16 | 27 |
| 13746-12-10 | 13748-12-10 | 16 | 5/8 | -10 | 15.9 | 1 1/16x12 | 74 | 49 | 21 | 32 |
| 13746-12-12 | 13748-12-12 | 19 | 3/4 | -12 | 19.1 | 1 1/16x12 | 83 | 58 | 22 | 32 |
| 13746-14-12 | 13748-14-12 | 19 | 3/4 | -12 | 19.1 | 1 3/16x12 | 84 | 58 | 22 | 36 |
| 13746-16-12 | 13748-16-12 | 19 | 3/4 | -12 | 19.1 | 1 5/16x12 | 84 | 58 | 24 | 41 |
| 13746-12-16 | 13748-12-16 | 25 | 1 | -16 | 25.4 | 1 1/16x12 | 91 | 61 | 21 | 32 |
| 13746-16-16 | 13748-16-16 | 25 | 1 | -16 | 25.4 | 1 5/16x12 | 99 | 70 | 24 | 41 |
| 13746-20-16 | 13748-20-16 | 25 | 1 | -16 | 25.4 | 1 5/8x12 | 101 | 71 | 26 | 50 |
| 13746-20-20 | | 31 | 1 1/4 | -20 | 31.8 | 1 5/8x12 | 129 | 92 | 32 | 50 |
| | 13748-20-20 | 31 | 1 1/4 | -20 | 31.8 | 1 5/8x12 | 135 | 88 | 32 | 50 |
| | 13748-24-24 | 38 | 1 1/2 | -24 | 38.1 | 1 7/8x12 | 165 | 127 | 58 | 60 |

Approved **fitting series** for hose types, depending on size: Also available in stainless steel. Details can be found in CAT 4400.1/UK

| | | | | | | | | | | | | | | | | | |
|------------------------|-------|-------|-------|-------|-------|---------|------------|-------|-------|-----|-------|-------|------------|-------|-------|-----|-----|
| 46 or 48 | 441 | 461LT | 462 | 462TC | 462ST | 629PU | 692PU Twin | | | | | | | | | | |
| 46 | 463 | 492 | 492ST | 492TC | 692 | 692Twin | 692TC | BCH1 | | | | | | | | | |
| 48 | 301SN | 304 | 387 | 387ST | 387TC | 421RH | 421SN | 426 | 421TC | 436 | 441RH | 462PU | 462PU Twin | BCH2 | HT2 | ... | |
| | 471TC | 477 | 477ST | 477TC | 477RH | 487 | 487ST | 487TC | 493 | 787 | 787TC | 787ST | 797 | 797TC | 797ST | 811 | 881 |